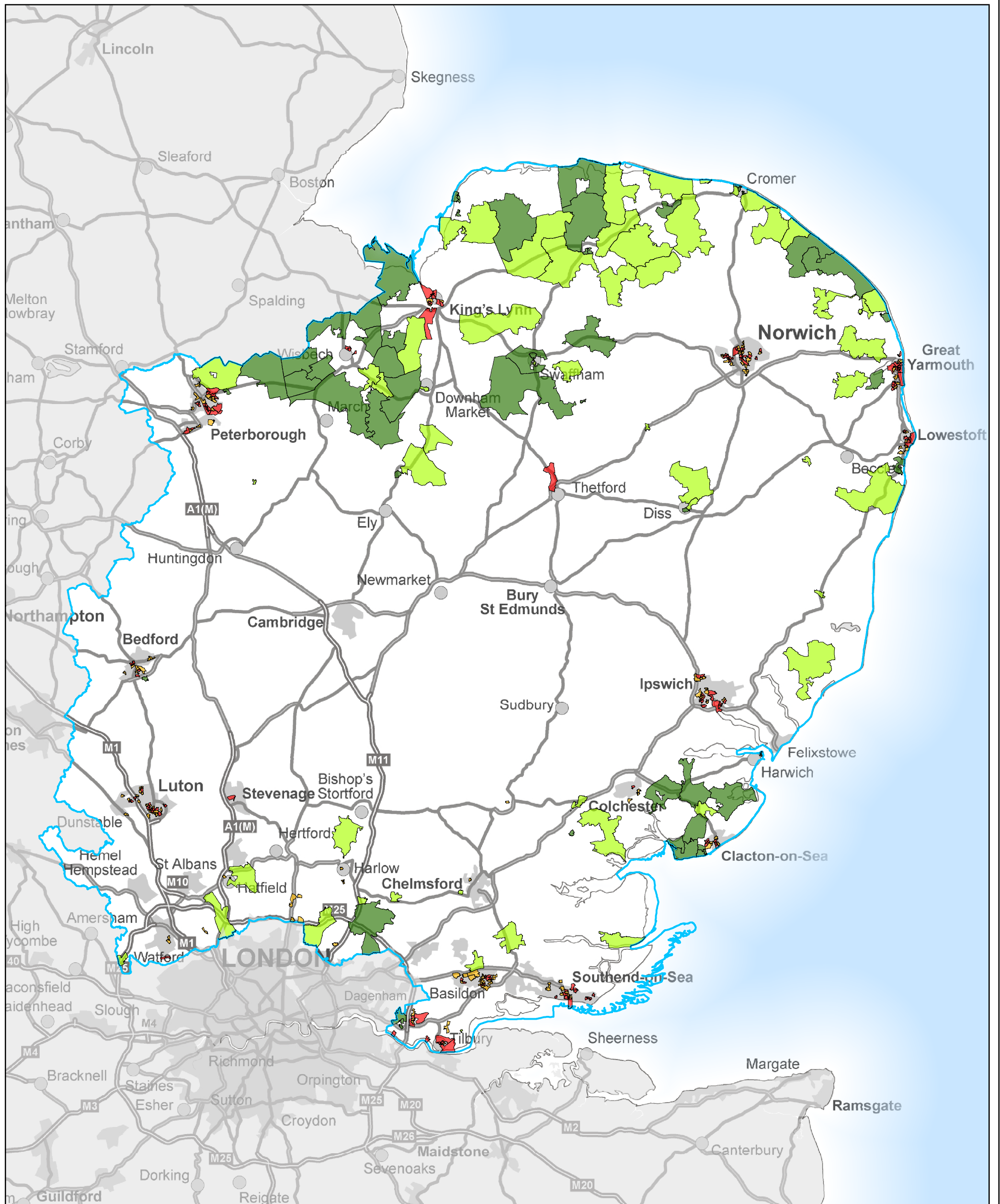


# Most Deprived Areas by Region - East of England



- Rural-Worst 5%
- Rural-Worst 5-10%
- Urban-Worst 5%
- Urban-Worst 5-10%

Based on the Indices of Multiple Deprivation (IMD 2007) which was created by the Department of Communities and Local Government (DCLG). To obtain a regional view which includes rural deprivation the Super Output Areas for this map have been divided into rural and urban, using the Rural/Urban Classification, and by region. The most deprived 5% and 5-10% have been selected for each category.



This map is reproduced from Ordnance Survey material with the permission of Ordnance Survey on behalf of the Controller of Her Majesty's Stationery Office. © Crown copyright. Unauthorised reproduction infringes Crown copyright and may lead to prosecution or civil proceedings. Natural England 100046223 2008 ARM, Science Services Ref: GIU07-56