



ROYAL HASKONING

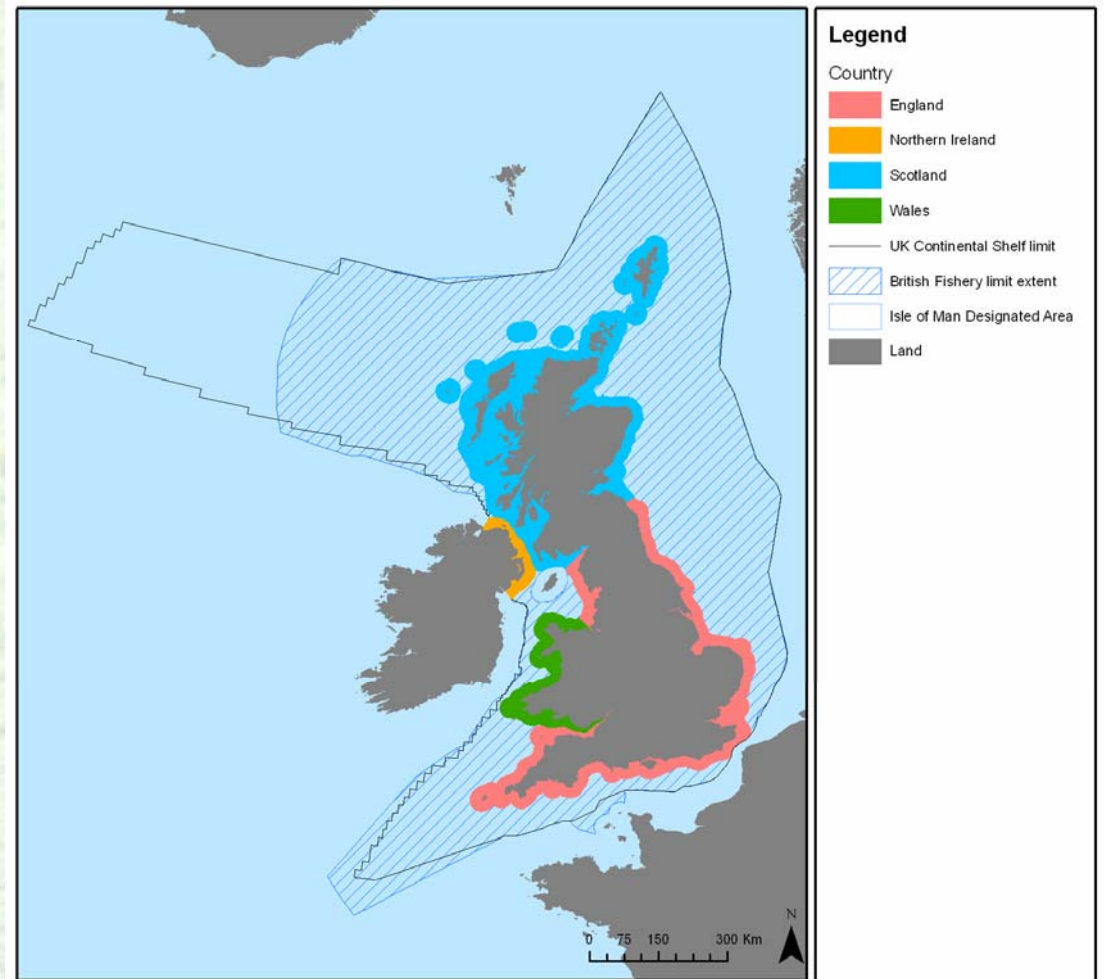


Current Natura 2000 survey work for marine SACs

**Viv Blyth-Skyrme – Joint Nature Conservation Committee
&
Peter Gaches – Royal Haskoning**

**Towards a coherent network of Marine Protected Areas
Scarborough, October 2007**

- **Offshore SAC survey programme**
 - Priorities
 - Aims
 - Strategies
- **Progress and next steps**
- **Natural England's SAC survey programme (Royal Haskoning)**



Selecting survey areas

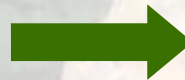
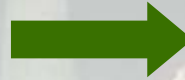
- Large area to investigate
 > Map Annex I habitat

Scientific literature

Government agencies

Marine industry surveys

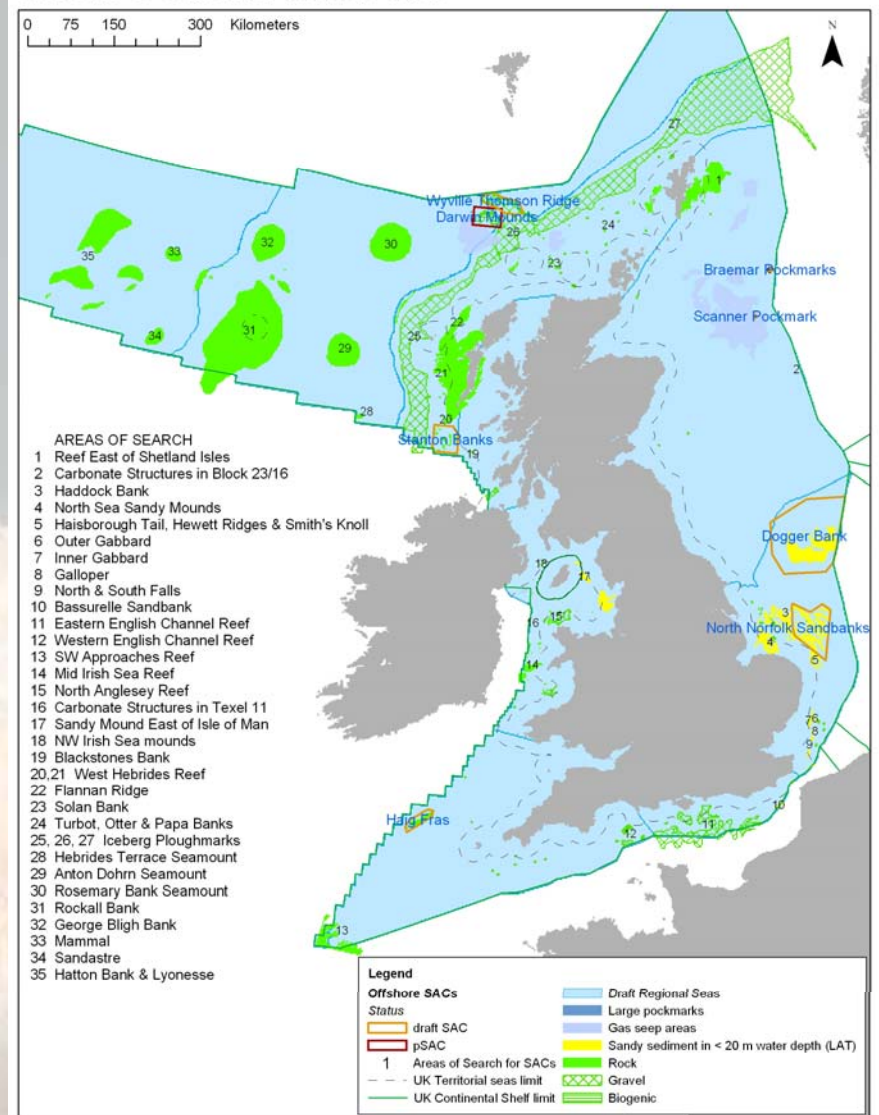
BGS seabed sediment



**‘Areas of Search’
for offshore SACs**

**JNCC Report Series
Report 325**

UK Areas of Search for Offshore SACs



World Vector Shoreline © US Defense Mapping Agency. Seabed habitat derived from BGS 1:250 000 seabed sediment maps by permission of the British Geological Survey © NERC (Licence No. 2002/85) and in part from bathymetric data © British Crown and Metoc Plc 2003. Data Licence 032003/005. All rights reserved. Reproduced by permission of the UK Hydrographic Office and the Controller of Her Majesty's Stationery Office. NOT TO BE USED FOR NAVIGATION.

Survey priorities

Areas of Search requiring survey:

- **Annex I Habitat probable but, insufficient data to:**
 - **Apply selection criteria**
 - **Characterise site**
 - **Determine site boundary**
- **Areas prioritised with consideration to**
 - **Contribution to UK SAC network**
 - **Opportunities for collaborative survey**

Survey Aims

- **Confirm presence of Annex I habitat**
 - Reefs
 - Sandbanks which are slightly covered by seawater all the time
 - Submarine structures made by leaking gases
- **Determine habitat extent**
- **Describe biological communities**



Achieved through biological and geomorphological survey

Survey Strategy

Flexible approach

Considerations:

Area

Location

Anticipated habitat

Partner aims

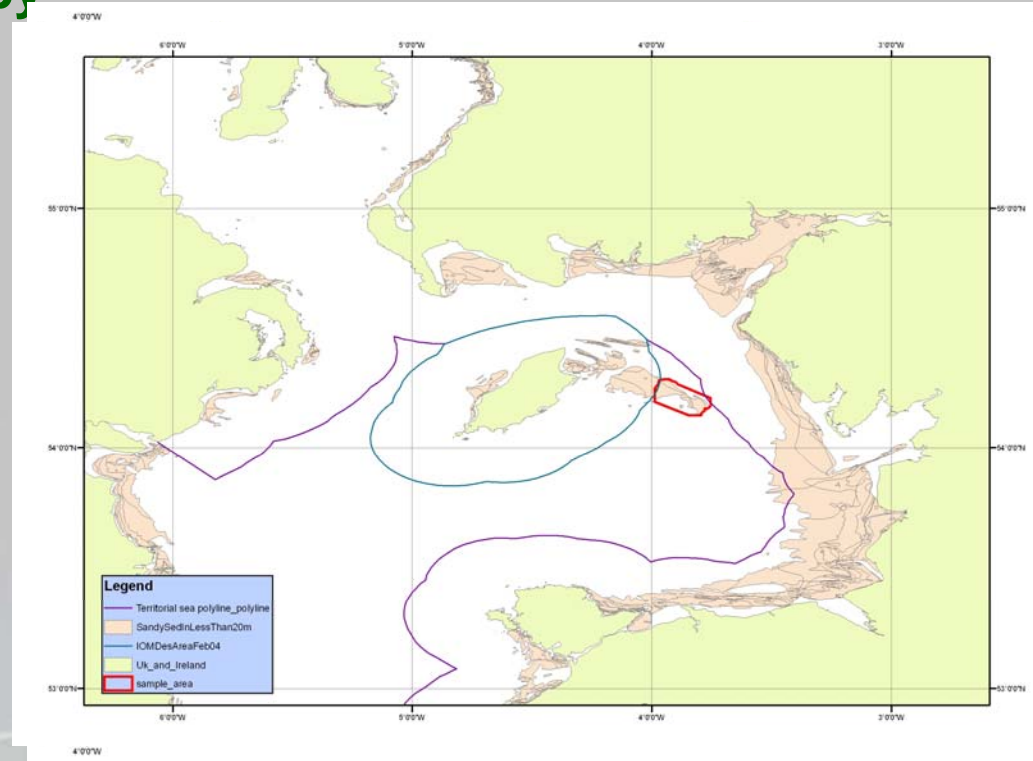
AIM:

Broad characterisation, not detailed map

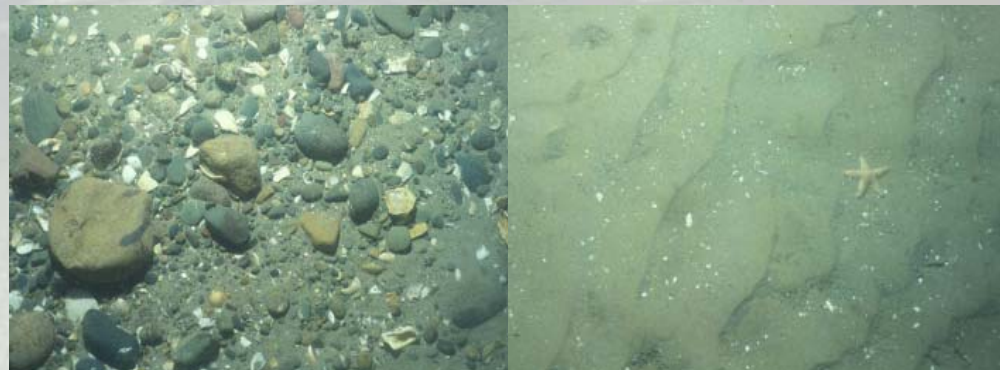
With sufficient data to apply selection criteria and define boundary

Sandbank east of Isle of Man

- ‘Sandbanks slightly covered by water at all time’
- Irish sea (east of Isle of Man)
- Relatively small (130km²)

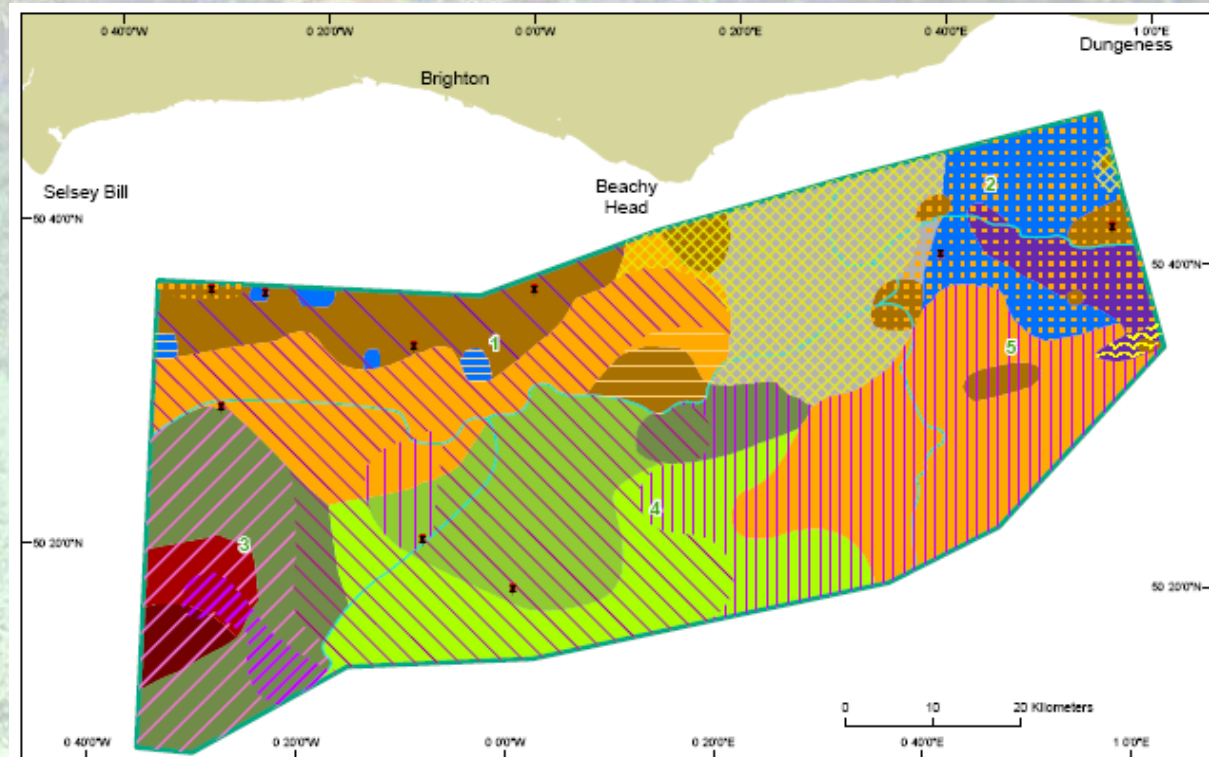


15km



Eastern English Channel

- ‘Sandbanks slightly covered by water at all time’ & ‘Reefs’ (stony, bedrock)
- Large area (>5000km²)



Project partners: BGS, CEFAS, JNCC, MES

Funded by: Marine Environment Protection ALSF

Building the UK SAC network

Significant progress with survey programme

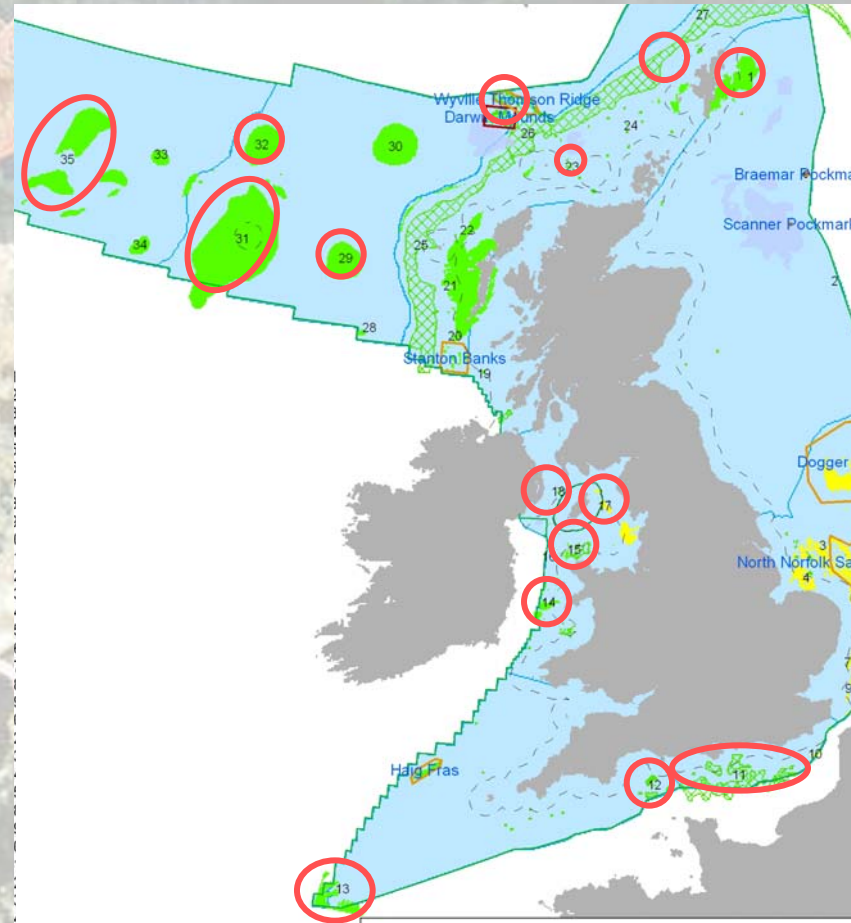
Next steps:

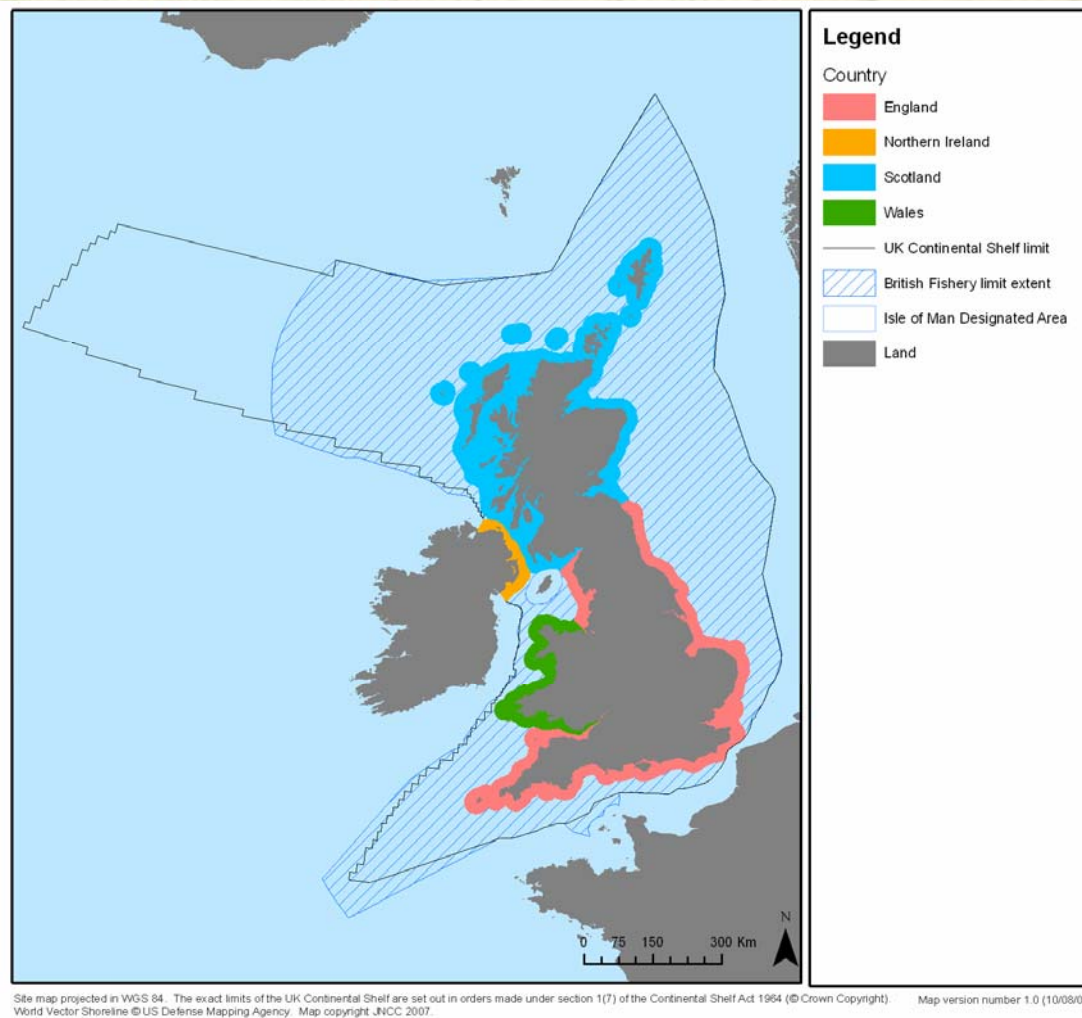
- Apply selection criteria to Areas of Search recently surveyed
- Continue to work with Country Agencies to identify gaps in UK network
- Prioritise offshore Areas of Search required to complete the network

Upcoming surveys:

Dogger Bank (Nov 2007 & Feb 2008: Emu Ltd)

Planning further survey commissions 2008





These photographs were taken during joint 2006 surveys undertaken as part of the UK Department of Trade and Industry's (now DBERR) offshore energy Strategic Environmental Assessment programme; and survey of areas of potential reef funded by Defra and managed on Defra's behalf by the JNCC to provide information to support the implementation of the EU Habitats Directive in UK offshore waters.