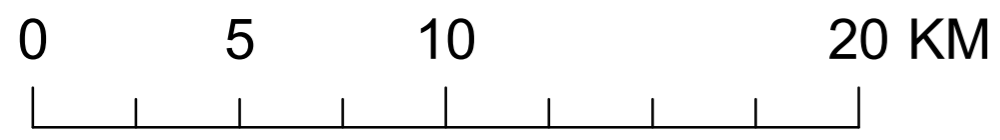
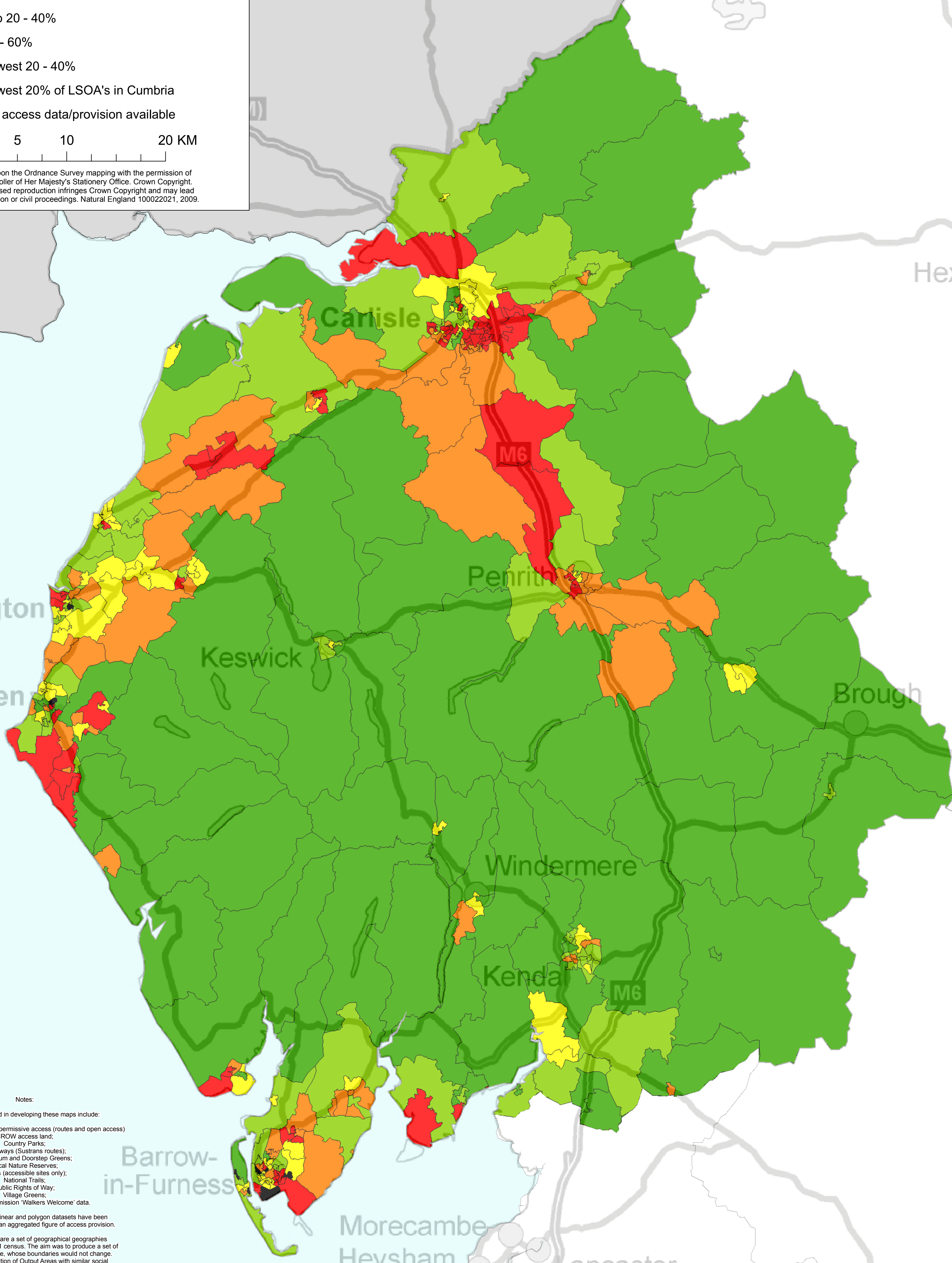


**North West Integrated Access  
 County Rank Percentage**

- Top 20% of LSOA's in Cumbria
- Top 20 - 40%
- 40 - 60%
- Lowest 20 - 40%
- Lowest 20% of LSOA's in Cumbria
- No access data/provision available



Based upon the Ordnance Survey mapping with the permission of the Controller of Her Majesty's Stationery Office. Crown Copyright. Unauthorised reproduction infringes Crown Copyright and may lead to prosecution or civil proceedings. Natural England 100022021, 2009.



Notes:

The datasets used in developing these maps include:

- Agri-environment scheme permissive access (routes and open access)
- CROW access land;
- Country Parks;
- Cycleways (Sustrans routes);
- Millennium and Doorstep Greens;
- Local Nature Reserves;
- NNR's (accessible sites only);
- National Trails;
- Public Rights of Way;
- Village Greens;
- Forestry Commission 'Walkers Welcome' data.

Where appropriate, linear and polygon datasets have been combined to produced an aggregated figure of access provision.

Super Output Areas are a set of geographical geographies developed after the 2001 census. The aim was to produce a set of areas of consistent size, whose boundaries would not change. They are an aggregation of Output Areas with similar social characteristics. Lower Super Output Areas typically contain 4 to 6 Output Areas with a population of around 1500.