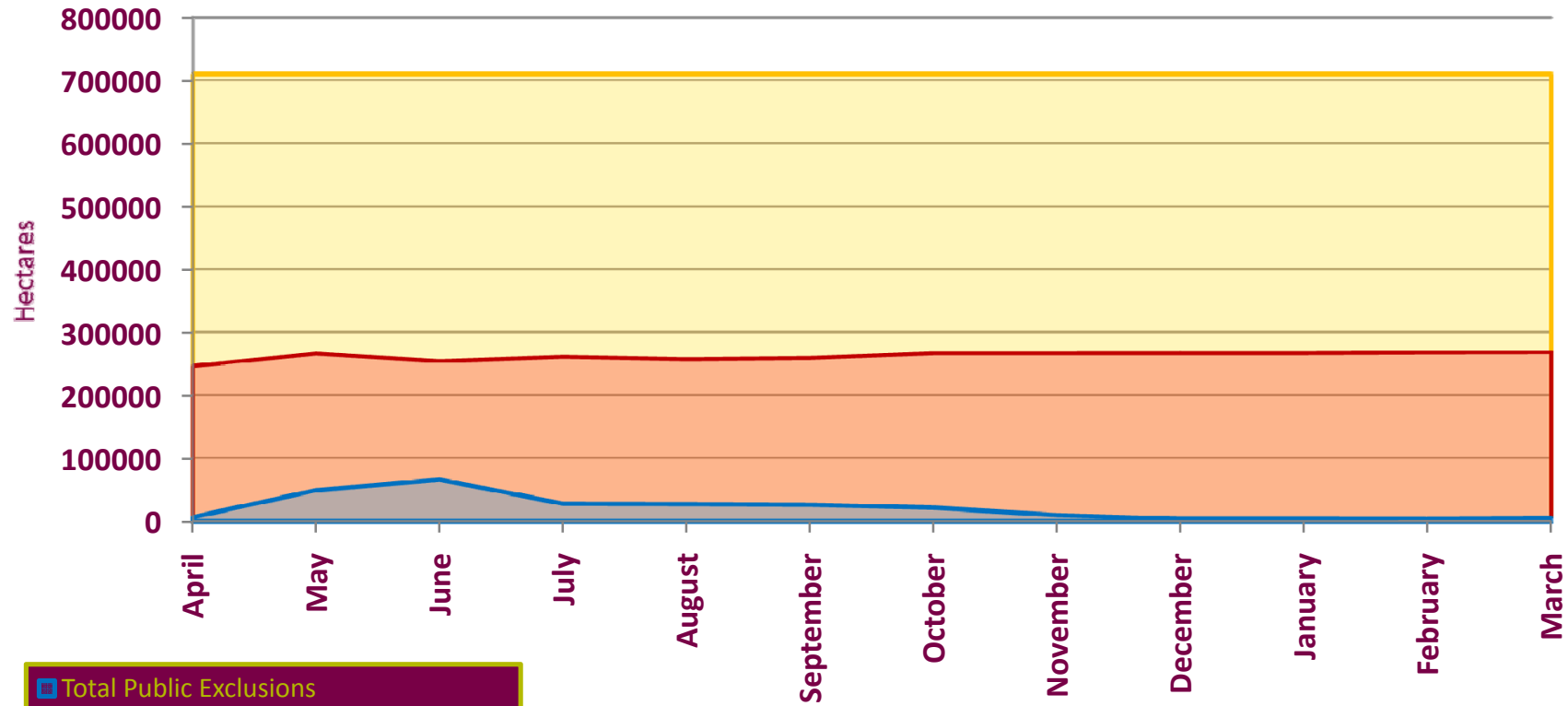
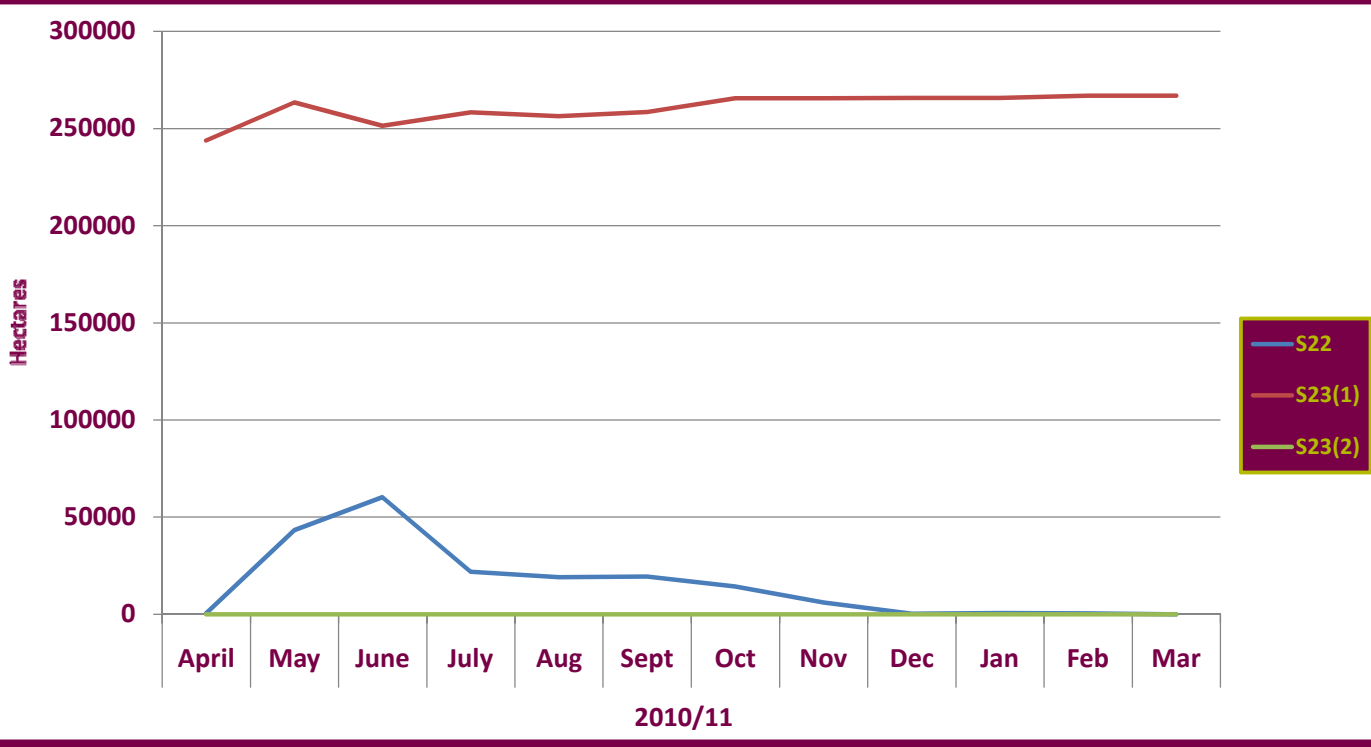
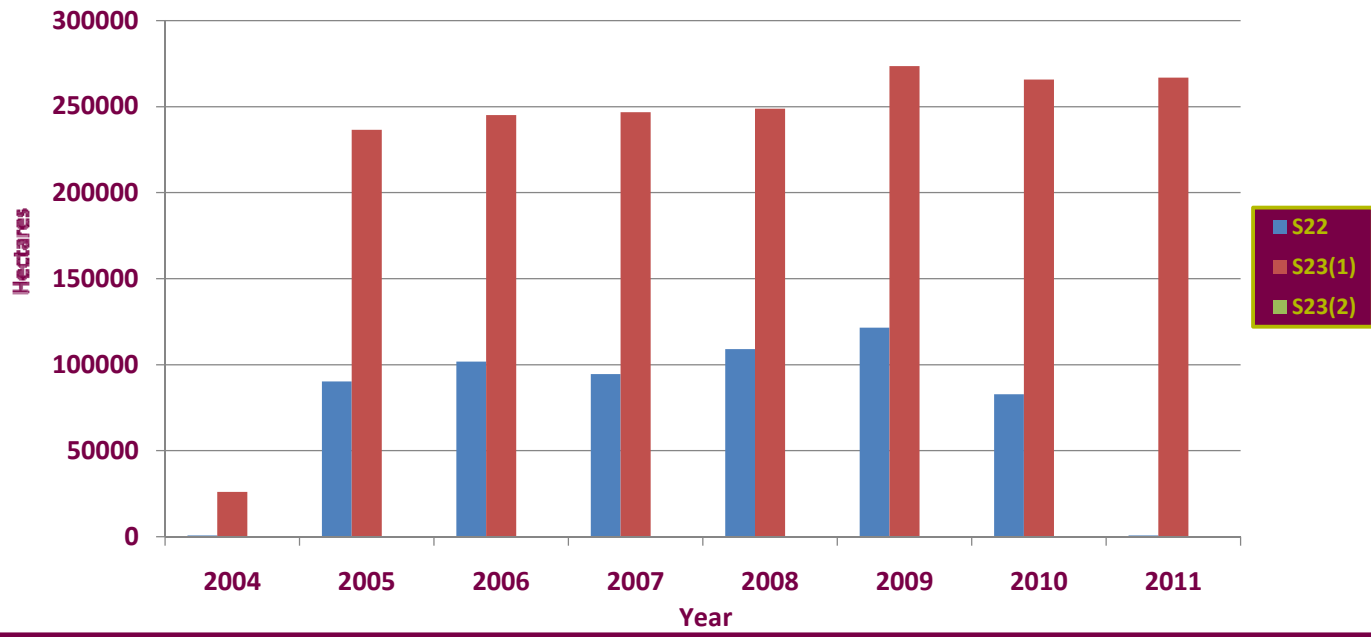


**Graph 1: Area of Open Access land available for open-air recreation 2010/11**  
**(excluding Forestry Commission Estate)**

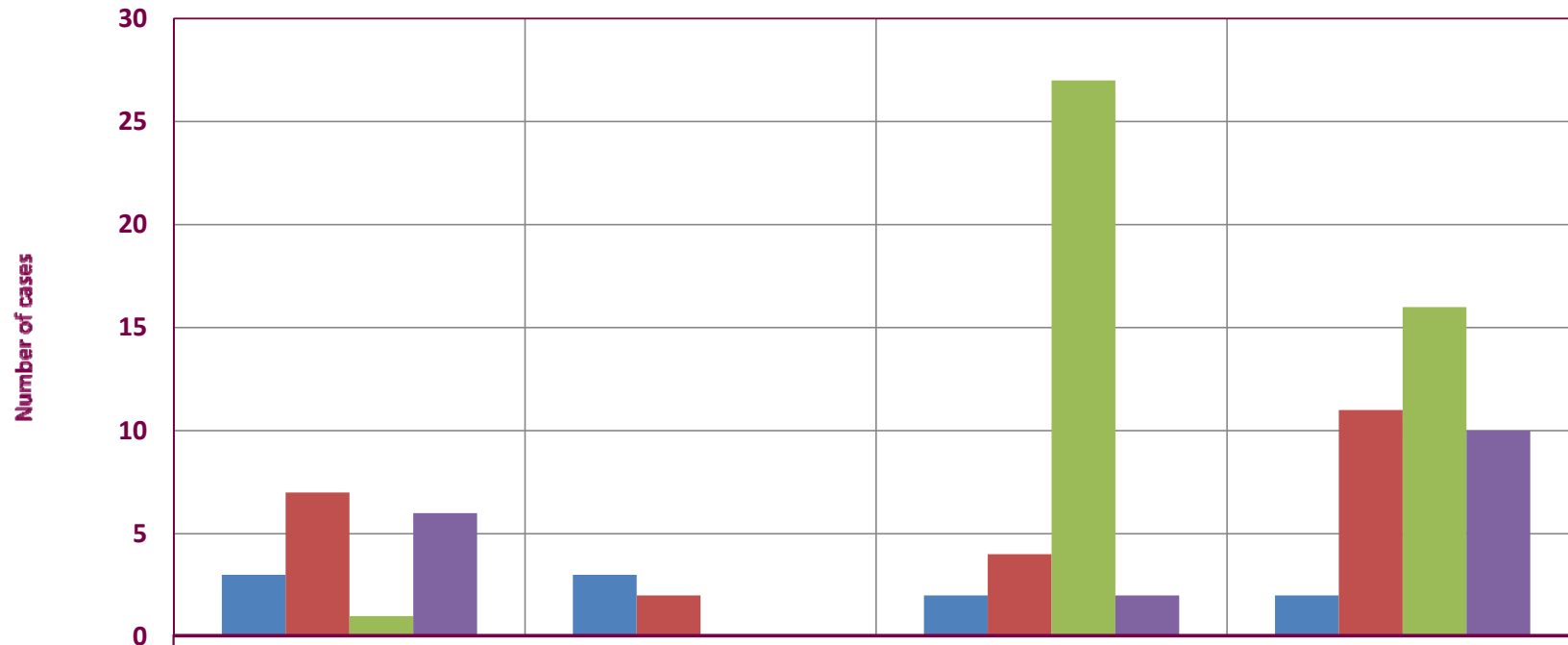


- Total Public Exclusions
- Dog Exclusions
- Total Restrictable Open Access Land (excluding Forestry Commission Estate)

**Graphs 2(a) & 2(b): Use of restrictions by land managers -  
Discretionary restrictions up to 31 March 2011 (excluding Forestry Commission Estate)**



**Graph 3: Number of new, varied, revoked and unchanged cases by section of CRoW Act  
April 2010 - March 2011 (excluding Forestry Commission Estate)**



	Section 24	Section 24 & 25	Section 25	Section 26
New Cases	16.99ha	22.61 ha	113.06 ha	1187.31 ha
Varied	1814.37 ha	82.81 ha	89.28 ha	2232.73 ha
No Change	2092.21 ha	0 ha	27187.06 ha	2325.58 ha
Revoked	5217.69 ha	0 ha	8.07 ha	2973.51 ha